



Altona Laverton Historical Society Inc.

PO Box 236 Altona 3018

NEWSLETTER

November 2019

ALTONA HOUSE



Pier Street circa 1900 with the building known as "Altona House"

YOU MAY HAVE HEARD OF THE HOMESTEAD BUT WHAT ABOUT ALTONA HOUSE?

To set the scene ,the following comments appeared in part in past newsletters following research by members Graeme Reilly and Bob Hawkins, a précis of a section of this research follows below.

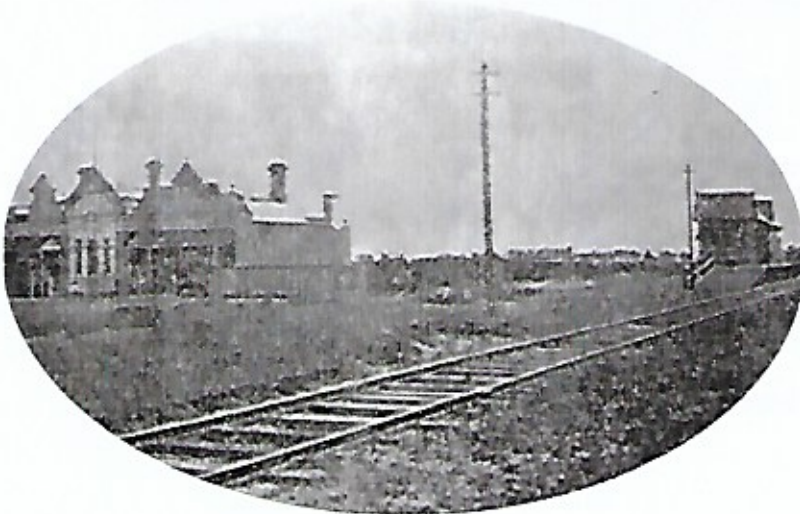
"The first mentions of the name "Altona," appears as that of the home of this name occupied by Robert Wrede in 1842, and "Laverton,"in the same year when Alfred Langhorne is recorded as having a dwelling of that name , "near Williamstown".



The Williamstown Advertiser of 17 September 1887 contained an article stating that, 'Altona' had been bought by A. T. Clark, for development as a suburb. The article also made mention that gas and water. The first sale took place on 8 September 1888, with special trains running from Spencer Street railway station and steamers leaving from Queens Wharf and from Sandridge (Port Melbourne).

Building operations, including a post and telegraph office started on 7 October, however the land boom which had now reached enormous proportions burst Just before the 7th sale on the 27 October."

ALTONA HOUSE



The building proposed to be the Post and Telegraph Office (which is understood never to have eventuated) , is the one depicted and which eventually became known as Altona House.

The image on page one has a sign on the wall which appears to read,Altona Family Palace, this is taken to mean that at that time it was a coffee palace or boarding house.

The image left shows the proximity to the railway line and station.

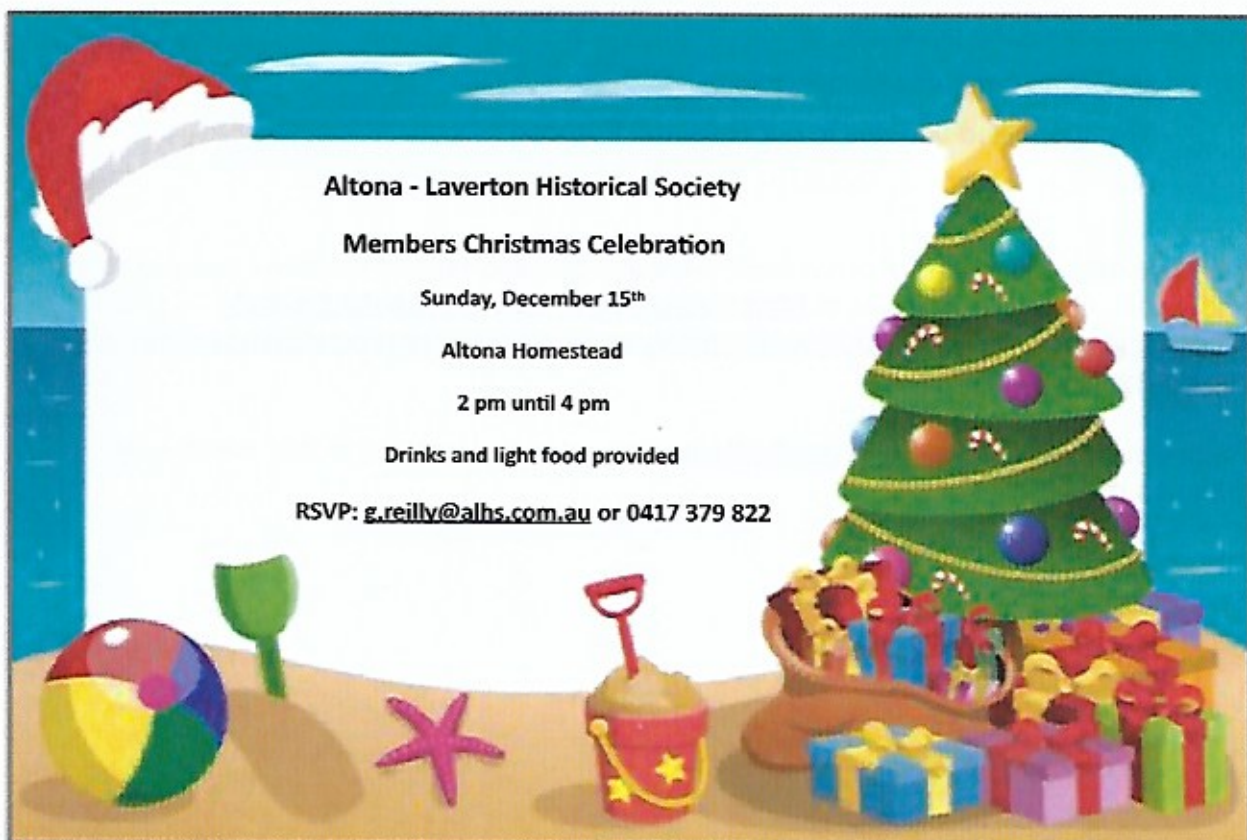
An image of "Altona House" Pier Street and Station circa 1890

“Altona House” had an ambitious beginning, initially planned to be the wireless and telegraph station which apparently did not occur and then was used as an aid to attract visitors and potential purchasers of land at the newly established Estate shortly after land sales opened in 1887.

It had a history of various tenants with occupation as a coffee palace, boarding house, use by the army during the early stages of World War One, then standing vacant for some time, and finally as Offices, shops, boarding house and dwellings.



2019 81-85 Pier Street an extension & facsimile of the early frontage remains



Move to Adopt the Model Rules

Recently your committee members participated in a planning day which included a review of what we do and how we are governed. One item that was considered was that ALHS still operates under its own rules that were drawn up in 1997, some 22 years ago.

In 2012 the introduction of the Associations Incorporation Reform Act 2012 required groups like ALHS to decide to remain with their own rules or adopt the then newly introduced Model Rules. At that time the ALHS 1997 rules were kept. What this has meant is that where our rules don't cover a specific situation we must then refer to the Model Rules. This can cause confusion and additional workload for members and the committee.

It is with this in mind that the committee members are proposing to put forward a motion to all members that ALHS consider adopting the Model Rules.

The key variance between what is contained within our own rules are two items:

1. That our annual membership fees are to be reviewed at a general meeting prior to the AGM where the Model Rules allows for fees to be reviewed at the AGM; and
2. Currently ALHS cannot charge an entry fee to the Homestead or an event where the Model Rules do not restrict either of these items.

This also gives us an opportunity to review our role and purpose statements to ensure they remain relevant to ALHS and what it's role should be. We are therefore looking for your feedback on the possibility of:

1. Moving to adopt the Model Rules,
2. Any suggested updates to our Role and Purpose,
3. Any other items that should be considered in this specific change.

We have attached a copy of our current rules and purpose for you to review and you can find a copy of the Model Rules at <https://www.consumer.vic.gov.au/clubs-and-fundraising/incorporated-associations/running-an-incorporated-association/rules#model-rules-versus-own-rules>

Please direct any feed back to g.reilly@alhs.com.au or by speaking to any member of your committee.

Graeme Reilly
Secretary

Presidents Report October 2019

As we head towards the festive seasons and the end of another year for the society, I thought it would be timely to reflect on the great work that has been achieved by the Committee and active members during the year.

This year we have continued on our long term objective to 'connect with the community' and we are achieving well beyond our expectations. We have had more people pass through the Homestead, on our Devonshire Tea Sundays, being involved in Tours and via special open days than ever before.

Our Website and Facebook page audiences are increasing every month with great feedback on our posts and the information we are publishing on the history and people of our area. People are also enjoying the 'snippets' of history we print on our placemats on Devonshire Tea days as well as the presentations showing on the main visual screen in the Homestead.

We are now being asked more about the history of Altona and Laverton, the pioneers of our area and key events that took place in our neighbouring suburbs.

Our members have produced two great publications that continue to be well received by the community and have involved people from across Hobsons Bay in the research and writing of these publications. We have been actively involved with our local council and local industries and we have supported many events in Logan Reserve by ensuring that the Homestead is open to the public during these times.

Our Devonshire Tea Sundays have enabled us to recruit a great team of volunteers who tirelessly support the Historical Society each month and enable our small number of members to talk to visitors about our Society, the Homestead and Altona & Laverton.

Following our AGM in August, the Committee has looking at ways that we can prosper and group both internally and within the community, but this will only happen with your continued support and new members. It was with one of our new members that we were able to put on an excellent display of the history of recorded sound, so we thank our newest member Graeme Keress.

The next time you are at the Homestead please take the opportunity to speak to one of your committee members and ask what activities are available for you to get involved in.

We hope to see you at our end of year festive function in December.

Kim Reilly

(President)